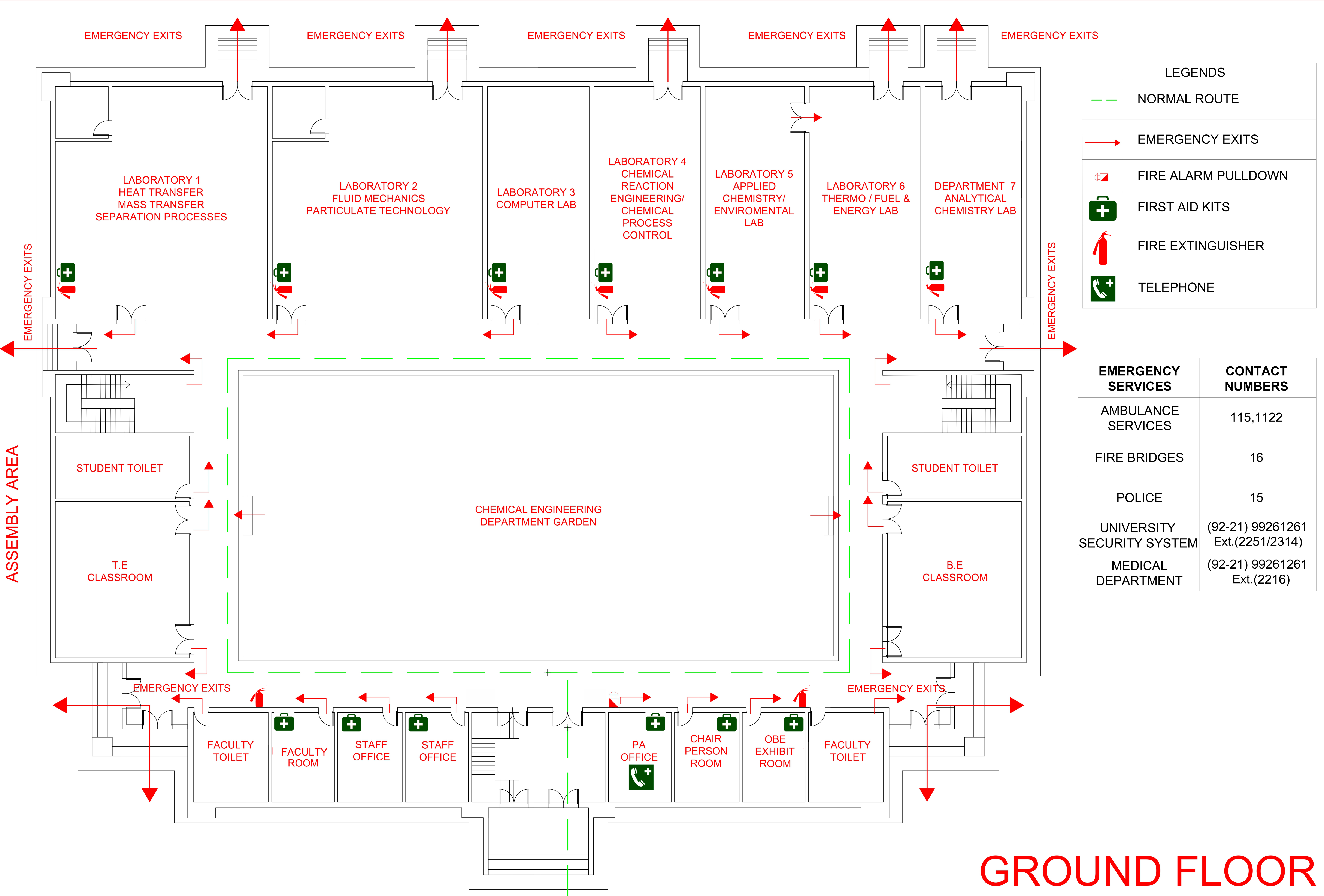


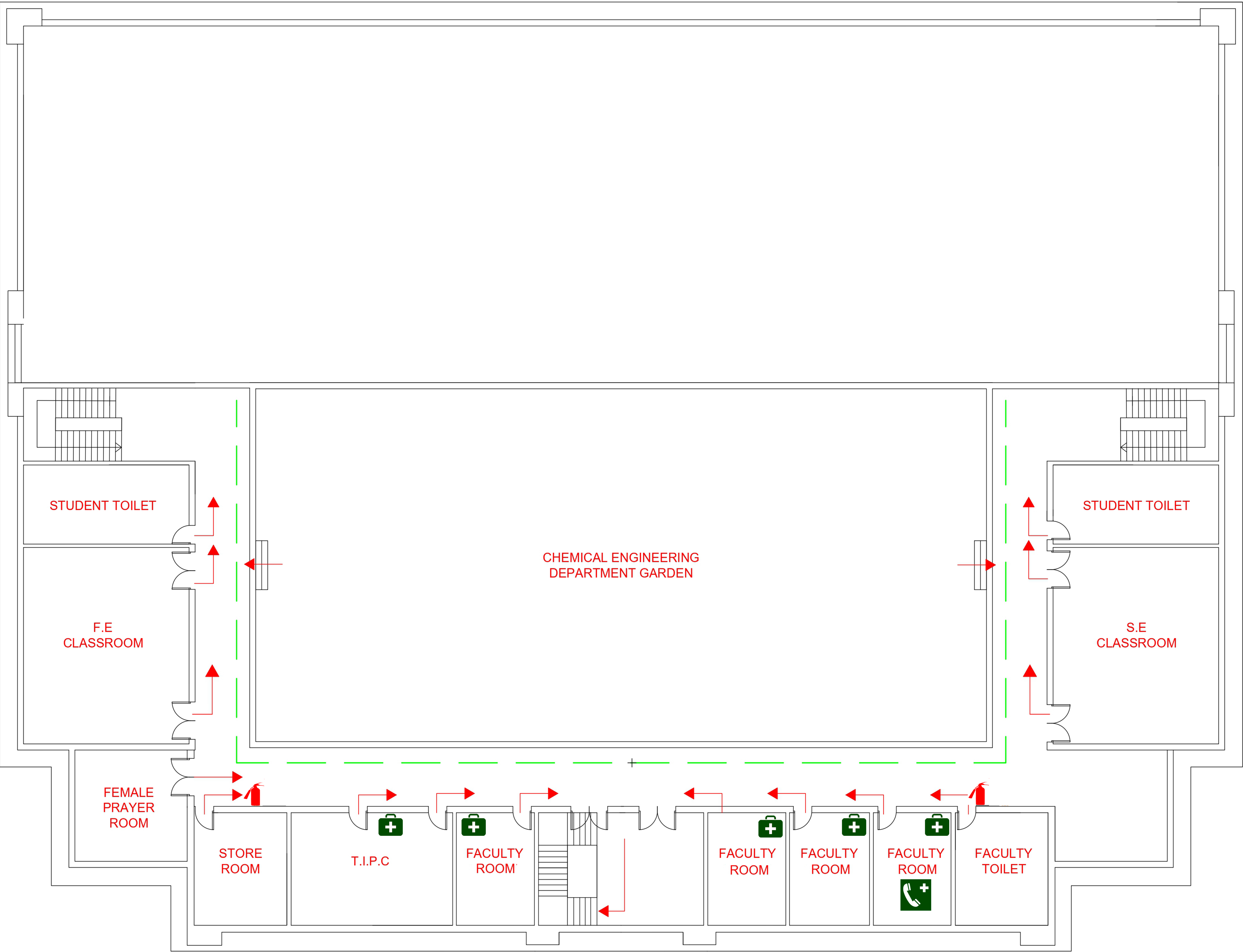


DEPARTMENT OF CHEMICAL ENGINEERING





DEPARTMENT OF CHEMICAL ENGINEERING



LEGENDS	
	NORMAL ROUTE
	EMERGENCY EXITS
	FIRE ALARM PULLDOWN
	FIRST AID KITS
	FIRE EXTINGUISHER
	TELEPHONE

EMERGENCY SERVICES	CONTACT NUMBERS
AMBULANCE SERVICES	115,1122
FIRE BRIDGES	16
POLICE	15
UNIVERSITY SECURITY SYSTEM	(92-21) 99261261 Ext.(2251/2314)
MEDICAL DEPARTMENT	(92-21) 99261261 Ext.(2216)

FIRST FLOOR